

Sonocaddie™ V100 Quick Start Guide– START HERE!

(1) Shut down all other programs and insert Sonocaddie™ V100 Software Disk.

(2) Once the disk is inserted this page(Fig. a.) will appear on your screen: Choose V100 Driver button to install V100 Driver.



Fig. a.

(NOTE: If a message(Fig. b.) shows on the screen and tells you that you have a newer driver on the system. It is welcome to use that driver and we also recommend you not to remove it because it might affect other program.



Fig. b.

(3) Once the driver installed, choose V100 Software button.

(4) The Sonocaddie Setup Wizard should appear. Click NEXT to start the installation. (Fig. c.)

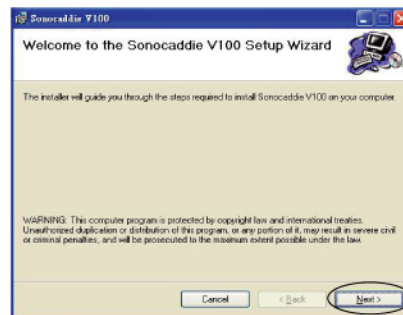


Fig. c.

(5) Follow all on screen prompts until you get to Installation Complete message.

(6) Click CLOSE to finalize the installation process.

(7) Close any remaining "windows" on your PC.

(8) Go to the desktop. Locate the icon labeled Sonocaddie V100 (Fig. d.) Click it.



Fig. d.

(9) The box(Fig. e.) to the right should appear whenever a new software version is released. Click YES to upgrade the software to the newest version available.

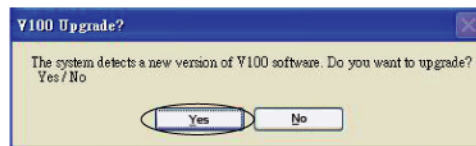


Fig. e.

(10) The Sonocaddie Download/Login Page(Fig. f.) will appear. Click "SIGN UP NOW". (NOTE: The next time you go to this page you will LOGIN only. Your login will be your email address and password that you create when you first sign up. EMAIL addresses/PASSWORDS are CASE-SENSITIVE)



Fig. f.

(11) SIGN UP NOW

Enter all information required on the page(Fig. g.) to the right. Make sure to read the Terms of Service and accept them. Once accept is checked a "FINISH" button will appear underneath.

(NOTE: Product Serial Number is required to sign up for Sonocaddie V100 membership. It is located underneath the battery)



Fig. g.

(12) Click the FINISH button at the bottom of the page. And go back to the desktop to run the V100 software to download course data.

CONGRATULATIONS!

You have now set up your Sonocaddie™ V100 unit for downloading. Please flip the page for Quick Start Downloading instructions.

Sonocaddie™ V100 Quick Start Downloading Guide

- (13) Power up your V100 unit by pressing power key for 3 seconds.
- (14) Select "Link" on the "Main" menu of your V100 unit (Fig. h.).
(Note: A dialog box may open showing a removable disk– close this box)
- (15) Connect the V100 to your computer with the USB cable.
- (16) Go to the desktop. Click on the V100 Software icon (Fig. i).
- (17) The box (Fig. j) to the right should appear whenever a new software version is released. Click YES to upgrade the software to the newest version available
- (18) The Sonocaddie Login Screen (Fig.k) will appear. Enter Email Address & Password then click LOGIN.
- (19) After Log-In, the V100 Management Screen (Fig. l.) will open.
- (20) If you see the "Press Here to Connect V100" (Fig. l.) button flashing on the software screen. Please click on it to complete connection process.
- (21) Click the COURSE TAB
- (22) Use the "search" function to find your course. (Hint: partial course names are better!) Click GO!
- (23) You will see all courses that you have searched for appear under your Course Tab. (See Fig m. for example.)



Fig. h. Select "Link" on the "MAIN" menu.



Fig. i. Click here to start

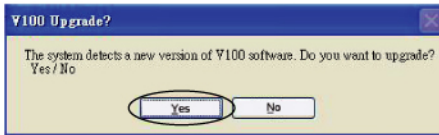


Fig. j.



Fig. k. V100 Log-In Screen

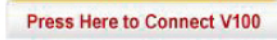


Fig. l.

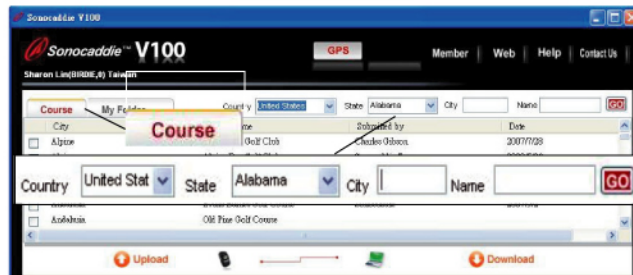


Fig. l. The V100 Management Screen– Where it all happens! The Top Half of this screen represents your FOLDER. The Bottom half represents your V100 unit, and shows all information stored on your V100.

- (24) Check the box beside the course(s) you would like to download.



Fig. m. Course search

- (25) Click "Download". The courses will appear in the V100 TAB (Fig n). This could take a few minutes depending on how many courses you select. (NOTE: Only Birdie member have access to the "My Folder" Tab.)
- (26) You may save courses from your V100 unit to the "My Folder" portion of the V100 Management Screen.
In the V100 TAB, check the box to the left of the course you would like to save in "My Folder".
Click the "My Folder" TAB.



Fig. n. Uploading from V100 to "My Folder"

Click UPLOAD. Once the upload is complete you will see that your courses are now in "Your Folder".

DETAILED usage instructions are in the USER GUIDE included with your V100 package.

Congratulations!

You have now successfully downloaded courses to your V100 unit and are ready to go the course! Should you be in need of further instruction on using your new GPS unit please refer to the user guide included with your system.