

Sonocaddie™

V300 Quick Start Guide– START HERE!

(1) Shut down all other programs and insert Sonocaddie™ V300 Software Disk.

(2) Once the disk is inserted this page will appear on your screen:
Choose Sonocaddie V300 button.

(3) The Sonocaddie Setup Wizard should appear. Click NEXT to start the Installation.

(4) Follow all on screen prompts until you get to Installation Complete message.

(5) Click CLOSE to finalize the installation process.

(6) Close any remaining “windows” on your PC.

(7) Go to the desktop. Locate the icon labeled Sonocaddie V300 (RED Sonocaddie Logo). Click it.

(8) The Software Upgrade box to the right should appear.

- For **Windows 2000/XP** user, please click YES (Fig.1.) to upgrade the software to the newest version. Then jump to (9) to sign up membership now.

- For **Windows Vista** user, please click "NO" (Fig.2.) for the first time. And follow 8.1 "First-time set-up steps in Windows Vista" to run as an administrator.

8.1 First-time set-up steps in Windows Vista

For the Vista operating system, you must "Run the V300 program as an administrator in Windows Vista".

In Windows Vista, Sonocaddie V300 Software will only run correctly if you run it as an administrator. Please follow the steps to finish the settings. You will only need to make this change the first time you use the Sonocaddie V300 software on this computer- thereafter the settings should stay the same and you can simply double click the V300 icon.

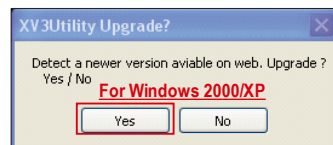
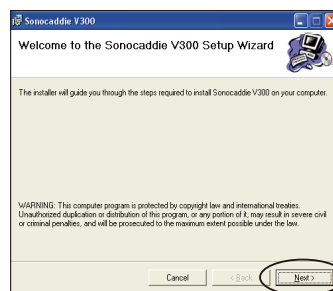


Fig. 1.

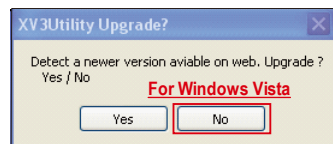


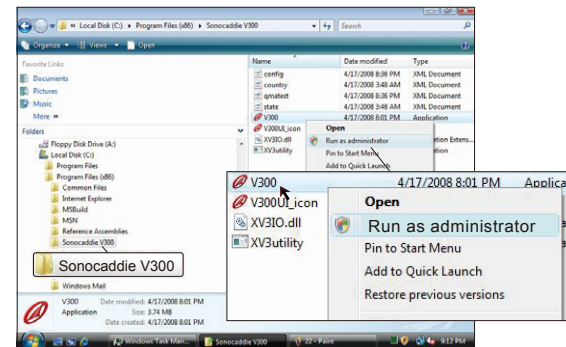
Fig. 2.

8.1.1

After finishing the installation, please enter C:\Program Files\Sonocaddie V300 to adjust the settings.

8.1.2

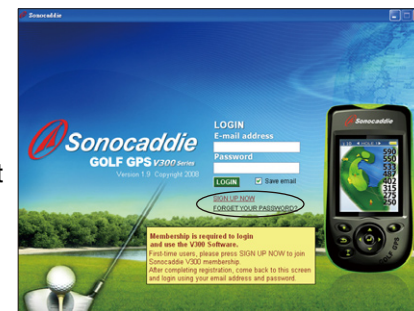
Please right-click the V300.exe icon, and then click shield symbol "Run as administrator" for the Vista operating system.



8.1.3

Go back to the desktop and double click the V300 icon. Click **YES** to upgrade and run the V300 software.

(9) The Sonocaddie Download/Login Page will appear. Click "SIGN UP NOW". (NOTE: The next time you go to this page you will LOGIN only. Your login will be your email address and password that you create when you first sign up. EMAIL addresses/PASSWORDS are CASE-SENSITIVE)



(10) SIGN UP NOW

Enter all information required on the page to the right. Make sure to read the Terms of Service and accept them. Once accept is checked a "FINISH" button will appear underneath. (NOTE: Product Serial Number is required to sign up for Sonocaddie V300 membership. It is located underneath the battery)

(11) Click the FINISH button at the bottom of the page. And go back to the desktop to run the V300 software to download course data.

CONGRATULATIONS!

You have now set up your Sonocaddie™ V300 unit for downloading. Please flip the page for Quick Start Downloading instructions.

Sonocaddie™ V300 Quick Start Downloading Guide

- (12) Go to the desktop. Click on the Sonocaddie V300 icon (Fig. a).



Fig. a. Click here to Start

- (13) The box (Fig. b) to the right should appear when the new software version released. Click YES to upgrade the software to the newest version available.

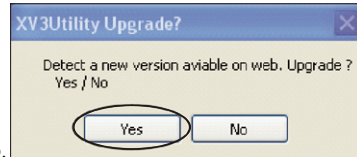


Fig. b.

- (14) The Sonocaddie Login Screen (Fig c) will appear. Enter Email Address & Password then click LOGIN.



Fig. c. V300 Log-In Screen

- (15) Power up your V300 unit by pressing power key for 3 seconds.

- (16) Connect the V300 to your computer with the USB cable. When prompted on V300 screen, choose YES (right soft key) to link the V300 with computer. (Note: A dialog box may open showing a removable disk— close this box)

- (17) After Log-In, the V300 Management Screen (Fig. d.) will open.

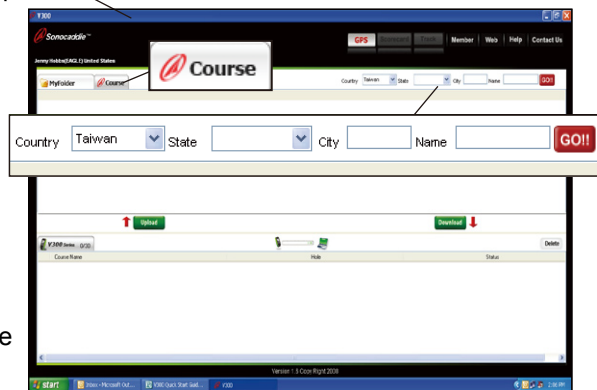


Fig. d. The V300 Management Screen— Where it all happens!

- (18) Click the COURSE TAB

- (19) Use the “search” function to find your course. (Hint: partial course names are better!) Click GO!

- (20) You will see all courses that you have searched for appear under your Course Tab. (See Fig e. for example.)

The Top Half of this screen represents your FOLDER. The Bottom half represents your V300 unit, and shows all information stored on your V300.

- (21) Check the box beside the course(s) you would like to download.

NOTE: Make sure that under the “status” column you see a color “course layout” icon.

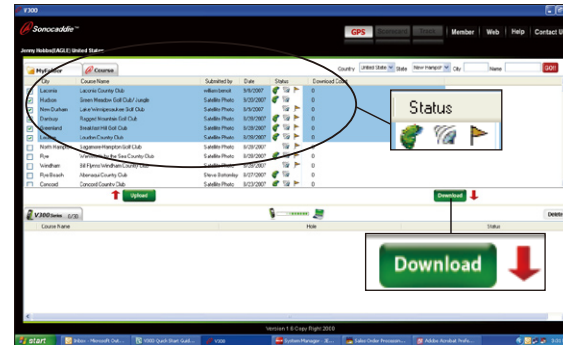


Fig e. Course search

- (22) Click “Download”. The courses will appear in the V300 TAB (Fig f).

This could take a few minutes depending on how many courses you select.

- (23) You may save courses, scorecards and tracks from your V300 to the “My Folder” portion of the V300 Management Screen.

In the V300 TAB, check the box to the left of the course you would like to save in “My Folder”.

Click the “My Folder” TAB.



Fig. f Uploading from V300 to “My Folder”

Click UPLOAD. Once the upload is complete you will see that your courses are now in “Your Folder”. Scorecards may be reviewed by selecting the “SCORECARD” button. Select the scorecard you wish to review and click on the “Review” button.

DETAILED usage instructions are in the USER GUIDE included with your V300. (The TRACK REVIEW function is coming fall '08—watch www.Sonocaddie.com for news!)

CONGRATULATIONS!

You have now successfully downloaded courses to your V300 and are ready to go the course! Should you be in need of further instruction on using your new GPS unit please refer to the user guide included with your system.